



Loading Capacity: 15 kN test load (per EN124)

Materials: Frame in extruded aluminium. Cover in extruded aluminium bonded to a composite aluminium honeycomb panel (with a white coating). Stainless steel screw connections. EPDM seal

Features: Modern lightweight-construction access cover. The cover is lifted by the hinge, significantly reducing the effort required. A safety device is fitted, locking the cover in the raised position. As the cover is not filled with concrete, installation is quicker and simpler. There is a recess of 24mm for laying slabs, tiles, parquet etc. In the case of thin tiles, the difference in height can be compensated for by using a suitable tile adhesive (MAPEI Keralastic) and waterproof building board. Sealed design with a very high-quality finish.

Lift Open System: SureCover SCCA comes with a set of lifting keys and precise installation instructions. Jammed covers are released by simply turning the Brass Key provided.

Applications: As a cover inside buildings which can be opened by one person.

Installation: Installation should be carried out according to our installation instructions. In the case of water tight covers, care must be taken to seal the outer frame into the surrounding floor. Attach slabs or tiles fully (over the whole surface) with a suitable tile adhesive (MAPEI Keralastic). In the case of thin tiles or slabs, use waterproof building board to compensate for the difference in height.

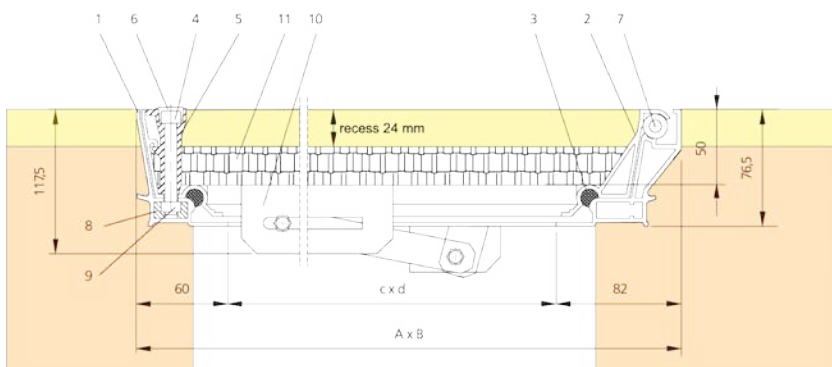


Detailed view of the safety device The cover is lifted by the hinge, significantly reducing the effort required.



Web Link:

<https://addlite.co.uk/product-category/hago-floor-access-covers/>



- 1 Frame
- 2 Cover
- 3 Seal
- 4 Allen Screw
- 5 Die-cast corner
- 6 Plastic cap
- 7 Hinge
- 8 Injection-moulded part
- 9 Square boss
- 10 Safety device
- 11 Aluminium honeycomb plate (with white coating)

| Product Reference | Clear Opening | Outside Dimensions | Weight |
|-------------------|---------------|--------------------|--------|
| | (≈ mm) | (≈ mm) | |
| | c x d | A x B | |
| SCCA 55 | 500 x 500 | 620 x 620 | 10 kg |
| SCCA 64 | 600 x 400 | 720 x 540 | 10 kg |
| SCCA 66 | 600 x 600 | 720 x 740 | 12 kg |
| SCCA 77 | 700 x 700 | 820 x 840 | 14 kg |
| SCCA 86 | 800 x 600 | 920 x 740 | 14 kg |
| SCCA 88 | 800 x 800 | 920 x 940 | 17 kg |
| SCCA 106 | 100 x 600 | 1120 x 740 | 17 kg |