

Coxdome Flat Glass

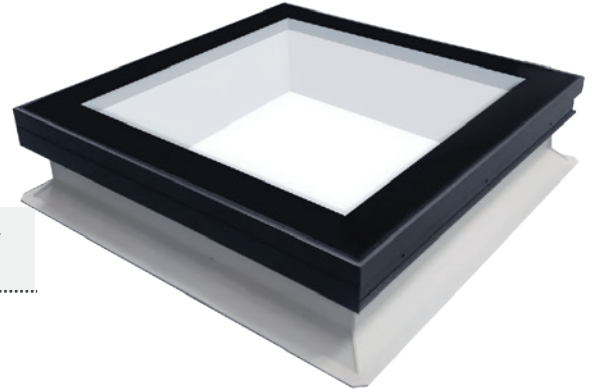
The Addlite Coxdome range of flat glass rooflights features an aluminium frame with an uninterrupted glass surface which offers clear panoramic views. The slim aluminium frame is thermally broken with a toughened outer glass pane with a ceramic edge coating. Glass is 6mm toughened external pane with black ceramic print/Argon filled cavity/8.4mm Laminated, Low E Glass.

MATERIAL

- Double glazed glass
- Aluminium Frame powder coated RAL 7015 Slate Grey
- PVC Upstand

PERFORMANCE

- U-value 1.0 W/m²K
- Sound insulation (Rw) approx 35dB
- UV & Impact Resistant Frame
- Hail Resistant



Available Sizes

Structural Opening	External Kerb Size	Glass Assembly
650 x 650	750 x 750	6T-15-3.3.2
800 x 800	900 x 900	6T-15-3.3.2
800 x 1100	900 x 1200	6T-15-3.3.2
900 x 900	1000 x 1000	6T-15-4.4.2
900 x 1400	1000 x 1500	8T-15-3.3.2
900 x 1700	1000 x 1800	8T-15-3.3.2
900 x 1900	1000 x 2000	8T-15-4.4.2
1100 x 1100	1200 x 1200	8T-15-3.3.2
1400 x 1400	1500 x 1500	10T-15-4.4.2

CAD Drawings

